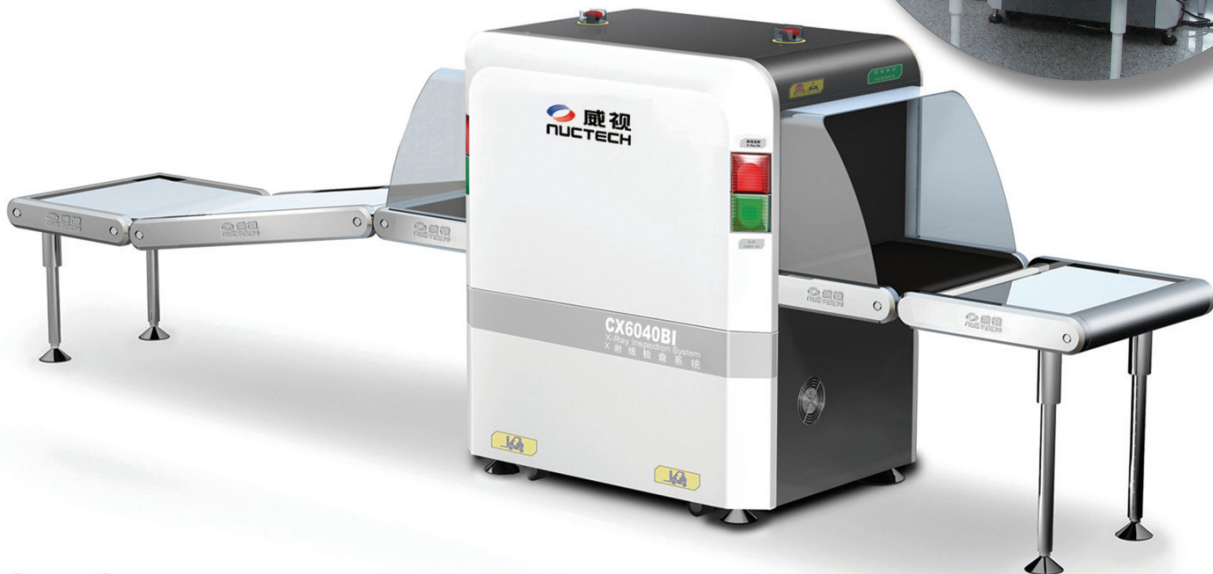




# NUCTECH™ CX6040BI

## X-RAY INSPECTION SYSTEM

EN

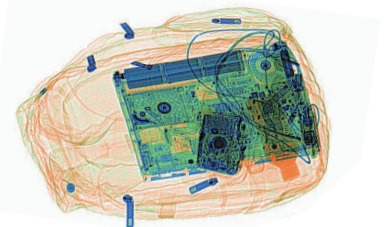


### Introduction

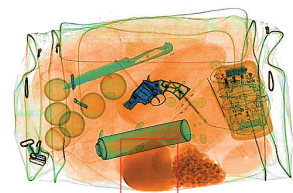
The NUCTECH™ CX6040BI is an advanced dual-energy X-ray inspection system, widely installed at airports, mass transit stations, critical infrastructures, post offices, and big events around the world. Coming from the best proven CX series products platform, and featuring unsuppressed image performance, ergonomic user interface, advanced imaging enhancing algorithms, powerful functions and network applications, and high reliability and safety, the CX6040BI is perfectly suitable for all security and customs applications.

### Technology Features

- World-leading image quality with high wire resolution of 38AWG and steel penetration up to 34mm.
- Explosives and narcotics detections and alarms according to the atomic number signatures.
- Threat Image Projection (TIP) ready X-ray system, providing a practical solution for operator performance monitoring and training, as well as reducing the probability of threats misses effectively.
- X-ray leakage around the equipment is close to natural background level, complying with all international safety and health standards.
- Ergonomic keyboard and user interface design ensure the efficiency and professionals of baggage screening operating.
- High reliable operating and data storage safety are guaranteed by applications of industrial computer, embedded system, and data access strategy and configurations.
- Optimized concept of operations, centralized image identify and storage capability implemented by various network applications.
- Modular design and constructions, combined with full built-in diagnostic facilities, make the system maintenance more economic and efficient.



Advanced material classification:  
orange for organic, blue for metal and  
green for mixed material



Automatic detection of drugs

# Technical Specifications

## General Specifications

Tunnel Dimensions	606mm(W) × 420mm(H)
Conveyor Speed	0.20m/s
Conveyor Height	680mm
Max. Load	160Kg

## Image Performance

Wire Resolution	0.1mm(38AWG)
Steel Penetration	34mm
Display Resolution	1280 × 1024

## Image Processing System

Image Enhancement	Color/BW, negative, high/low penetration, organic /inorganic stripping, general enhancement, variable absorptivity, suspect material enhancement, and pseudo color, etc.
Material Classification	According to atomic number signatures
ROI & Zoom	Step/stepless zoom, up to 32 times enlargement
Image Recall	Preceding images recallable
Image Storage Capability	Up to 50000

## Miscellaneous Functions

Standard Functions	Time/date display, counters, user management, system-on/X-ray-on timers, power on self test, built-in diagnostic facilities, dual-direction scanning, system log, system standby and training, etc.
Optional Functions	Explosives/narcotics detections, high-density area alert, threat image projection (TIP)

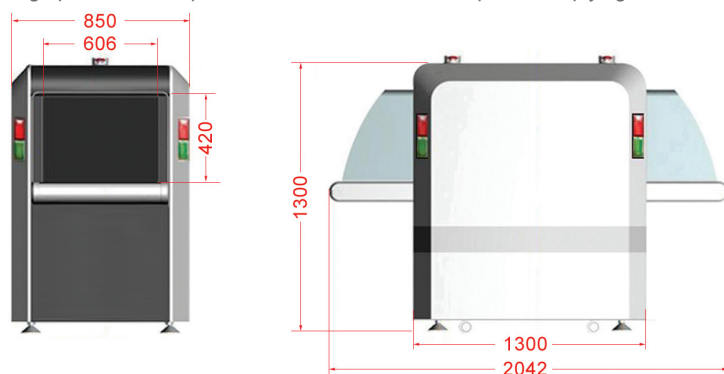
## Health and Safety

X-ray Leakage	Less than 1μGy / h (5cm from the housing), complying with all published international standards
Film Safety	Guaranteed for high speed film up to ASA/ISO1600 (33DIN)

## Installation Data

Dimensions	2042mm(L) × 850mm(W) × 1300mm(H)
Weight	500Kg
Storage Temperature / Humidity	-40°C ~ +60°C / 5% ~ 95% (non-condensing)
Operating Temperature / Humidity	0°C ~ +40°C / 5% ~ 95% (non-condensing)
Power Supply	220VAC/110VAC (-15%~ +10%), 50 Hz/60Hz ± 3Hz
Power Consumption	0.6kVA

Note: Image performance specifications are based on test piece complying with GB 15208.2-2006.



### NUCTECH COMPANY LIMITED

Address: 2/F Block A, Tongfang Building,  
Shuangqinglu, Haidian District,  
Beijing 100084, P.R.China  
Tel: +8610 62780909  
Fax: +8610 62788896/62784270  
Http://www.nuctech.com

### NUCTECH SYDNEY PTY LTD.

Address: Suite 4.04, 77 Dunning Avenue,  
Rosebery NSW 2018 Australia  
Tel: +612 96622307/96622317  
Fax: +612 96622371

### NUCTECH HONG KONG COMPANY LTD.

Address: Room 1602, The Metropolis Tower,  
10 Metropolis Drive, Hunghom  
Kowloon Hong Kong  
Tel: +852 27221828  
Fax: +852 27221849

### NUCTECH WARSAW COMPANY LIMITED SPOTKA Z.O.O.

Address: ul. Pandy 18  
02-202 Warsaw Poland  
Tel: +4822 6591545  
Fax: +4822 6581483

### NUCTECH COMPANY LTD. SUCURSAL ARGENTINA

Address: Juana Azurduy 1520, Piso 4  
Oficina C, Buenos Aires,  
Argentina  
Tel: +5411 47045924  
Fax: +5411 47045459  
Mobile: +54911 66630041/65314065

### NUCTECH COMPANY LTD. SUCURSAL VENEZUELA

RIF: J-30949364-7  
Address: Av. Francisco de Miranda, Centro  
Plaza, Torre A Piso 19, Oficina 19-C-D,  
Caracas, Venezuela  
Tel: +58212 2852594/2854194  
Fax: +58212 2854194  
Mobile: +58412 3217001



Copyright © 2011 NUCTECH COMPANY LIMITED, All Rights reserved.

Design and specifications are subject to change without notice.

Printed in CHINA, June 2011.



NUCTECH HAS BEEN AWARDED THE CERTIFICATE OF QUALITY MANAGEMENT SYSTEM (ISO9001:2000)  
NUCTECH HAS BEEN AWARDED THE CERTIFICATE OF ENVIRONMENTAL MANAGEMENT SYSTEM (ISO14001:2004)  
NUCTECH HAS BEEN AWARDED THE CERTIFICATE OF OCCUPATIONAL HEALTH AND SAFETY MANAGEMENT SYSTEM (OHSAS18001:2001)

110609