

NUCTECH™ CX6040D

X-ray Inspection System

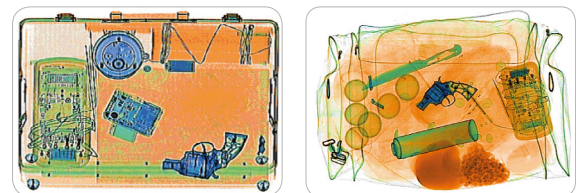


The NUCTECH™ CX6040D X-ray Inspection System is our new generation dual view dual-energy X-ray inspection machine for hand-held baggage, small checked luggage and parcels.

It employs a dual view design. Images of each view are shown on a dedicated monitor so that dangerous objects and contraband hidden beneath overlapping areas are more likely to be found and located.

The CX6040D stands out with more modern and ergonomic design for efficient and professional X-ray screening. The tunnel dimensions of 620mm width and 420mm height are perfectly suitable for baggage inspection at airports, railway stations, Customs, ports and stadiums, etc.

Combined with unsurpassed operation ergonomics, its reliability and safety can provide excellent image quality and advanced material classification. The CX6040D offers explosive and drug auto detection as options.



Technical Features

- Based on dual-view advanced technology that meets high-level security and operational effectiveness requirements.
- High image quality with wire resolution of 40AWG and steel penetration of 38mm.
- X-ray leakage around the equipment is close to natural background levels. Meets all published international health and safety standards.
- Automatic detection and alarm for explosives and drugs.
- Supports systematic, continuous and local zoom functions for flexible and quick enlargement of scanned images.
- Images can be saved in common image formats (BMP, JPG and PNG) and transferred to USB storage devices.
- Ergonomic key board and use interface design ensures the efficiency and professionalism of X-ray screening operations.
- Modular design and construction combined with a built-in diagnostic facility guarantee efficient equipment maintenance.

Technical Data

General Specifications

Dual-view Imaging	Both vertically and horizontally projected images
Tunnel Dimensions	620mm (W) × 420mm (H)
Conveyor Speed	0.2m/s
Conveyor Height	680mm
Max. Load	160kg

Image Performance

Wire Resolution	40AWG
Steel Penetration	38mm

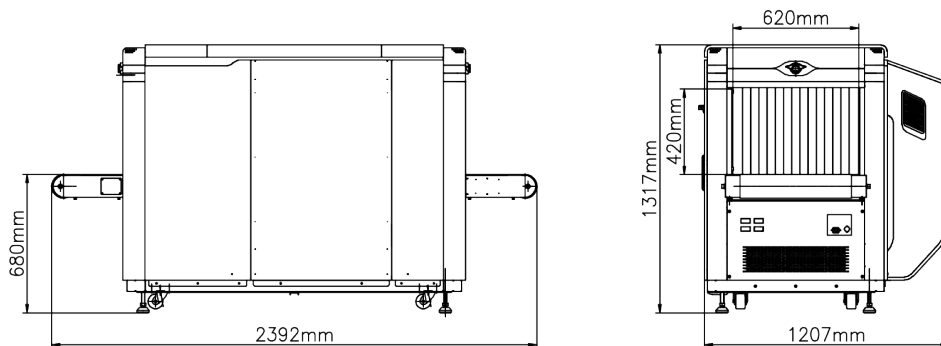
Image Processing System

Image Enhancement	Color / BW, negative, high / low penetration, organic / inorganic stripping, general enhancement, multi-absorptivity, and suspect material enhancement, etc.
Material Classification	According to atomic number signatures
ROI & Zoom	Step / step less zoom, enlargement up to 32 times
Image Recall	Preceding images recallable
Image Storage Capability	Up to 50,000 images

Installation Data

Dimensions	2392mm(L)×1207mm(W)×1317mm(H)
Weight	1000kg
Operating Temperature / Humidity	0° C ~ +40° C / 5%~95% (non-condensing)
Storage Temperature / Humidity	-40° C ~ +60° C / 5%~95% (non-condensing)
Power Supply	220VAC / 110VAC (-15%~+10%), 50Hz / 60Hz±3Hz
Power Consumption	1.2kVA

Note: Image performance specifications are based on test materials complying with CAAC standard.



System Functions

Standard Functions	Time / date display, counters, user management, system-on / X-ray-on timers, power on self-test, built-in diagnostic facilities, dual-direction scanning, system log, system standby and training, etc.
Optional Functions	Explosives / narcotics detections, high-density area alert, threat image projection(TIP)

Health and Safety

X-ray Leakage	Less than 1μSv/hour (5cm from the housing), complying with all published international health and safety standards
Film Safety	Guaranteed for high speed film up to ASA / ISO1600(33DIN)