

# NUCTECH™ CT<sub>MIC2100</sub>

## Introduction

NUCTECH™ CT<sub>MIC2100</sub> is a mobile security inspection checkpoint designed and manufactured independently by NUCTECH COMPANY LIMITED. The system innovatively integrates the Mobile CT Inspection System on the Volvo chassis. The Mobile CT Inspection System combines dual energy material discrimination with spiral CT technology to measure multidimensional information of detected object, so it automatically detects explosives / narcotics with a higher probability of detection and a lower false alarm rate. The system also provides high-resolution full volumetric color 3D images and CT slice images.

CT<sub>MIC2100</sub> also integrates various series of NUCTECH security inspection products on the Volvo chassis to detect baggage/items, human bodies and environment comprehensively, realizing a mobile one-stop security inspection solution.

With highly integrated design, comprehensive analyzing technologies, strong detection capability, high reliability and strong site adaptability, CT<sub>MIC2100</sub> can be widely applied to airports, Customs, stations, events and sensitive locations with strong mobility and flexibility.



## Technical Features

- **Mobile one-stop inspection**

With various detection technologies and inspection equipment integrated in One Stop, CT<sub>MIC2100</sub> provides multiple inspection functions including threat in baggage auto-detection, body-surface and inside scanning, radioactive substances monitoring, and suspicious liquids and solid samples rapid analyzing. Fulfilling the demand of comprehensive inspection on baggage, human bodies and environment, CT<sub>MIC2100</sub> is class leading in improving the security level for customers.

- **Automatic detection**

By measuring multidimensional information of detected object, the Mobile CT Inspection System automatically detects explosives / narcotics with a higher probability of detection and a lower false alarm rate.

- **High-resolution 3D images**

With the high-resolution color 3D images and CT slice images generated by the Mobile CT Inspection System, objects can be inspected in a 360-degree view free of blind corners. It is easier to detect contraband concealed in layers or placed at a particular angle.

- **Strong mobility and flexibility**

With advanced Volvo vehicle chassis, CT<sub>MIC2100</sub> employs both the mains and generator supply modes. Equipped with powerful air conditioner and fuel heater, CT<sub>MIC2100</sub> ensures fast response and application regardless of various outdoor environment and complex road conditions.

- **Easy inspection operation**

Equipped with smart electric leveling legs and full-automatic collapsible entrance conveyor, the Mobile CT Inspection System reduces operator working intensity and improves inspection efficiency.



- **Centralized operation room**

The centralized operation room provides all necessary equipment to control, monitor and operate all mobile inspection systems synchronously and seamlessly. High-definition video wall can display centralized supervisory information, mobile inspection system interfaces, and video monitoring, which is convenient for operators to comprehensively check inspection information and equipment status.

- **Multi-function rest area**

Equipped with sofa, folding bed, lockers and car refrigerator, etc., the multi-function rest area provides comfortable and convenient environment for operators.

- **Monitoring system**

With multiple high-definition video cameras inside and outside the vehicle, the operator can monitor the inspection progress and people activity in real time. Meanwhile, the operator can instruct inspection outside the vehicle from the operation room using the broadcasting system.

## Technical Date

### CT<sub>MIC2100</sub>

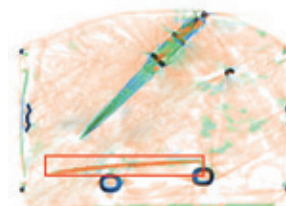
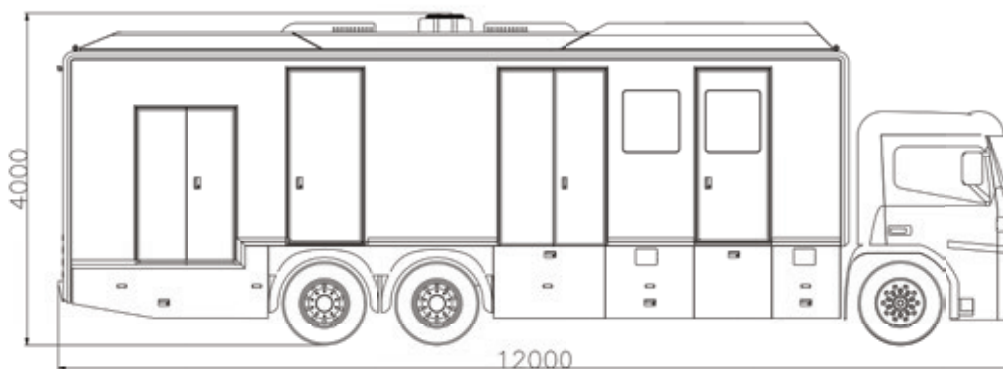
- Dimensions  $\leq 12000\text{mm (L)} \times 2500\text{mm (W)} \times 4000\text{mm (H)}$
- Weight  $\leq 25000\text{kg}$
- Power Supply Mode Mains supply & Generator supply
- Mains Supply Three-phase, 380VAC/50Hz
- Generator Supply Diesel
- Emission Standards Europe III-Europe VI (according to the requirements)

### Mobile CT Inspection System

- Conveyor Load 100kg (even distributed)
- Conveyor Speed 0.2m/s
- CT Spatial Resolution 2mm line pair
- Image Display High-resolution display of 3D images, CT slice images
- Image Processing Black-and-white, True color, Negative, Organic / Mineral striping, Edge enhancement, Surface enhancement, Super penetration, Measure, Clip, 3D marking
- ROI & Zoom 1 to 64 times enlargement, Stepless amplification

### Auxiliary Inspection Systems

- Mobile Millimeter-wave Body Inspection System
- Mobile Human Body Inspection System
- Mobile Raman Spectrometer
- Mobile Radiation Portal Monitor
- Mobile Handheld Backscatter Inspection System
- Mobile Desktop Explosives and Narcotics Trace Detector



CT Slice Image



3D Image

SIOMPSPD/TP- AA221801-EN

Copyright © 2018 NUCTECH COMPANY LIMITED, All Rights reserved.  
Design and specifications are subject to change without notice.

**CE** NUCTECH HAS BEEN AWARDED THE CERTIFICATE OF QUALITY MANAGEMENT SYSTEM (ISO9001:2008)  
NUCTECH HAS BEEN AWARDED THE CERTIFICATE OF ENVIRONMENTAL MANAGEMENT SYSTEM (ISO14001:2004)  
NUCTECH HAS BEEN AWARDED THE CERTIFICATE OF OCCUPATIONAL HEALTH AND SAFETY MANAGEMENT SYSTEM (GB/T28001-2011)

 **NUCTECH COMPANY LIMITED**

Address: 2/F Block A, Tongfang Building, Shuangqinglu,  
Haidian District, Beijing 100084, P.R.China

Tel: +8610 62780909

Fax: +8610 62788896

Http: //www.nuctech.com